



THE DOWNHOLE VISUAL
ANALYTICS COMPANY

BASIS™ M125

EV's Basis™ M125 Memory Camera provides black and white video at four frames per second as a reliable and cost effective solution to well diagnosis problems.

The latest image sensing technology, combined with digital compression and encoding, ensures that the Basis M125 camera stands out from other cameras in the industry.

Capable of recording up to five hours of continuous footage, the need for precise planning is eliminated as this allows for any variables encountered during the wireline intervention.

The programmable interval feature further increases functionality as it provides extended operating time.

The modular design of the system is lightweight and easily transportable. Alkaline batteries are available for low temperature operations and can be transported by air for increased operational efficiency.

Features:

- Records up to 5 hours of monochrome video at 4 frames per second. Recording time can be continuous, or split into 60 intervals with delay for well stabilisation and stations.
- Slickline or coil tubing conveyance

Benefits:

- Increased operational efficiency as it can be transported by air (battery selection subject to well temperature)
- Combinable with other memory or e-line measurements in the same string as the slickline camera is bottom only

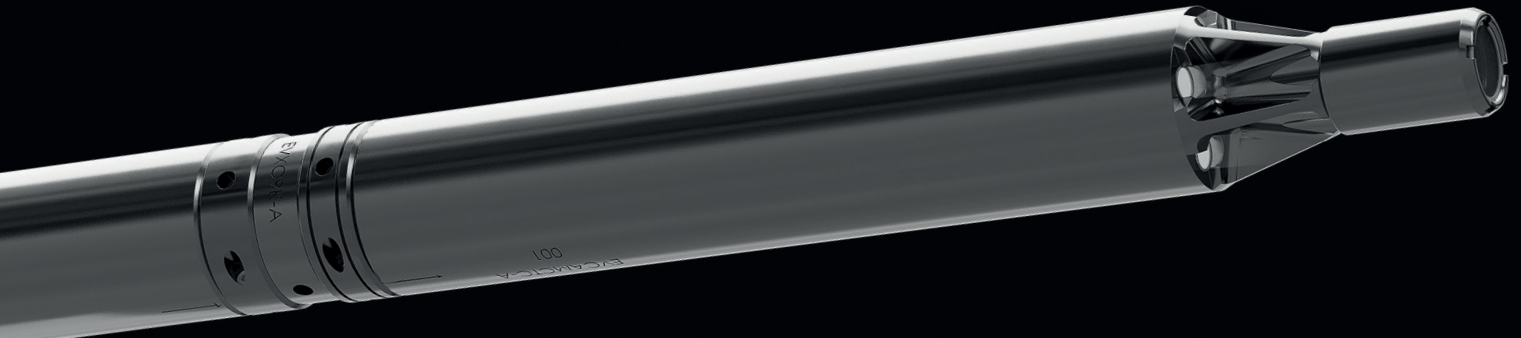
Applications:

- Imaging of dropped/stuck objects such as wellbore fish
- Obstruction identification
- Mechanical inspection of completion components
- Identifying well integrity issues: parted tubing, crushed pipe
- Wellbore clean outs
- Gas storage inspection

BASIS™ M125



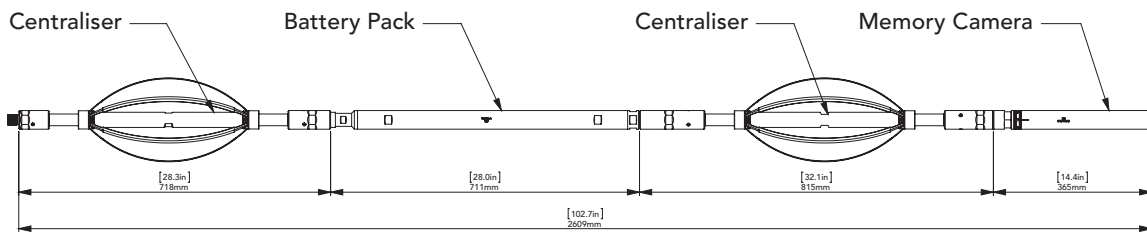
THE DOWNHOLE VISUAL
ANALYTICS COMPANY



SPECIFICATIONS

Diameter	1.7 in	43.0 mm
Length*	102.7 ¹ in / 136.7 ² in	2609 ¹ mm / 3471 ² mm
Pressure rating	15,000 psi	1034 bar
Temperature rating	257 °F ¹ / 230 °F ²	125 °C ¹ / 110 °C ²
Camera Type	Monochrome	
Video Frame Rate	4 fps	
Recording Time	Up to 5 hours with up to 60 programmable intervals	
Power	Lithium or Alkaline Batteries	
Coil Tubing Sleeve Diameter	2.25 in 2.875 in 3.15 in	57.2 mm 73.0 mm 80.0 mm
Flushing Rate	Up to 5 bbl/min	

***Example tool string¹**



***Example tool string²**

