



THE DOWNHOLE VISUAL
ANALYTICS COMPANY

OPTIS[®] TELEVIEWER

The Optis[™] Televiewer combines EV's industry leading Optis[®] cameras with Baker Hughes' TeleCoil[™]* to provide real-time video while maintaining the ability to pump fluids.

Baker Hughes TeleCoil[™] intelligent coil tubing (CT) services combine downhole power with accurate, real-time downhole data to improve operational efficiency. EV's Optis[®] Televiewer has been specifically designed to provide the same high quality, high resolution images as the industry leading Optis[®] camera system adding 'vision' to the TeleCoil[™] service.

A custom made running tool, containing 10 downward and 5 sideward ports, houses the Optis[®] Televiewer. The ports allow fluid to be pumped directly to the area of interest, in front of the downview camera, at up to 5 barrels per minute ensuring the highest possible quality fluid is in the zone of interest and the camera lens is preserved in a clean state.

The Optis[®] Televiewer platform provides vision to a coil tubing intervention and allows the operator to assess wellbore access ahead thus avoiding potentially costly and complicated situations.

Features:

- Downview and sideview colour cameras available for full wellbore coverage
- Flushing sleeves can be customised to suit the operation

Benefits:

- Running tool and flushing ports ensure high quality images and videos even in marginal fluid conditions
- Obstruction avoidance on coil tubing runs
- Pumping and ball drop operations possible simultaneous to video acquisition

Applications:

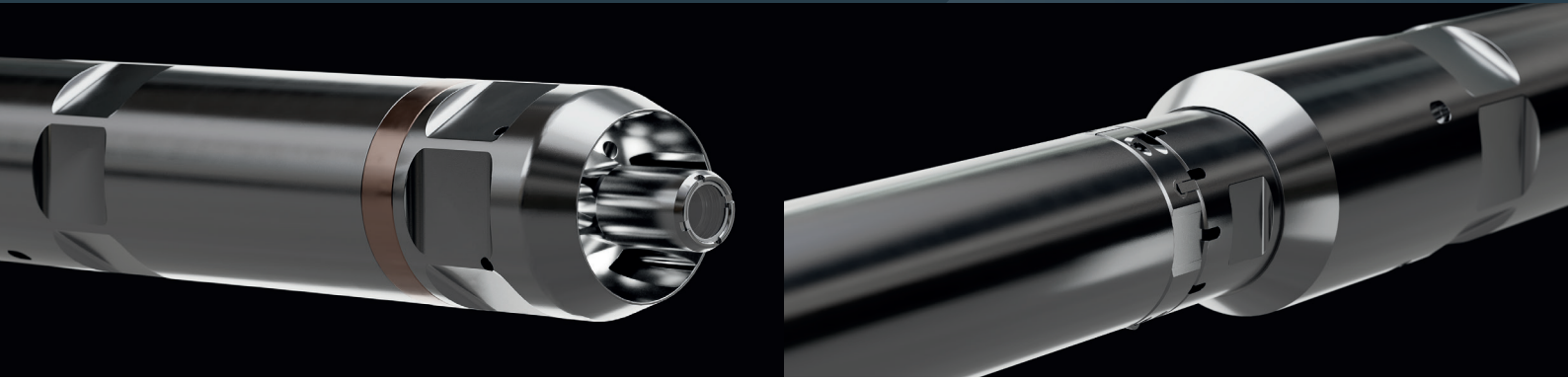
- Inspection of mechanical or access problems
- Pre and post-milling inspections
- Salt, scale and hydrate evaluation pre and post clean-up
- Evaluation of sliding sleeve or frac port status
- Detection of water entry into gas producing wells and oil entry in high water cut wells

*Telecoil is a trademark of Baker Hughes

OPTIS[®] TELEVIEWER



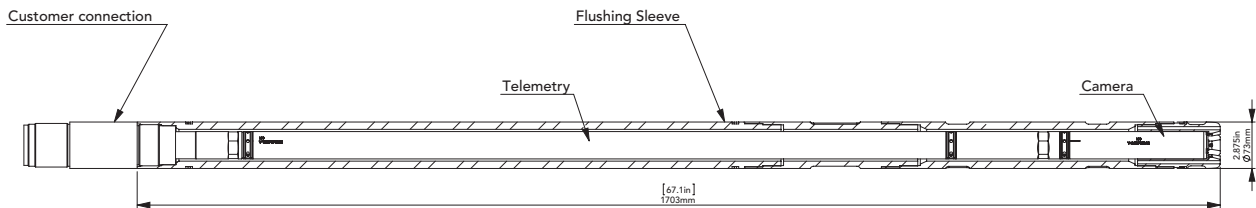
THE DOWNHOLE VISUAL
ANALYTICS COMPANY



SPECIFICATIONS

Diameter	1.7 in	43.0 mm
Length*	67.1 ¹ in / 104.1 ² in	1703.0 ¹ mm / 2644.0 ² mm
Pressure rating	15,000 psi	1034 bar
Temperature rating	257 °F	125 °C
Camera Type	Downview (Colour) & 360° Motorised Sideview (Colour)	
Video Frame Rate	Up to 25 fps	
Recording Capacity	Continuous real-time transmission to surface	
Flushing Sleeve Outer Diameter	2.875 in 2.125 in	73.0 mm 54.0 mm
Maximum Pump Rate	Up to 5 bbl/min	

*Example tool string¹



*Example tool string²

