



THE DOWNHOLE VISUAL
ANALYTICS COMPANY

OPTIS[®] FIBRE COIL

EV's Optis[®] Fibre Coil camera combines EV's industry leading electric line cameras with Schlumberger's ACTive™* coil tubing platform resulting in the unique offering of surface read-out, high quality video and images through fibre coil.

Optis[®] Fibre Coil has been specifically designed to offer a seamless fibre optic interface between EV's field proven cameras and transmission system with Schlumberger's ACTive™ Coil Tubing platform. By combining the benefits of the ACTive™ CT conveyance with those of EV's bi-directional, high rate telemetry system, communication with the latest, state-of-the-art camera and lighting technology can be controlled from and transmitted to the user at surface in real-time.

The ability to flush through the ACTive™ coil tubing at up to 2 barrels per minute, directly to the camera increases the potential for acquiring high quality images even with marginal downhole fluid clarity.

The Optis[®] Fibre Coil platform provides vision to a coil tubing intervention and allows the operator to assess wellbore access ahead thus avoiding potentially costly and complicated situations.

Features:

- Up to 24 hours of battery power with user controllable LED lighting and full colour, live streaming video at up to 25fps
- Flushing sleeves available to allow clear fluid to be pumped at up to 2 bbl/min directly to the camera lens and protects camera from mechanical impact
- Modular design includes optional centralisation to minimise risk of mechanical hang-up

Benefits:

- Running tool and flushing ports ensure high quality images and videos even in marginal fluid conditions
- Obstruction avoidance on coil tubing runs
- Pumping and ball drop operations possible simultaneous to video acquisition

Applications:

- Inspection of mechanical or access problems
- Pre and post-milling inspections
- Salt, scale and hydrate evaluation pre and post clean-up
- Evaluation of sliding sleeve or frac port status
- Detection of water entry into gas producing wells and oil entry in high water cut wells

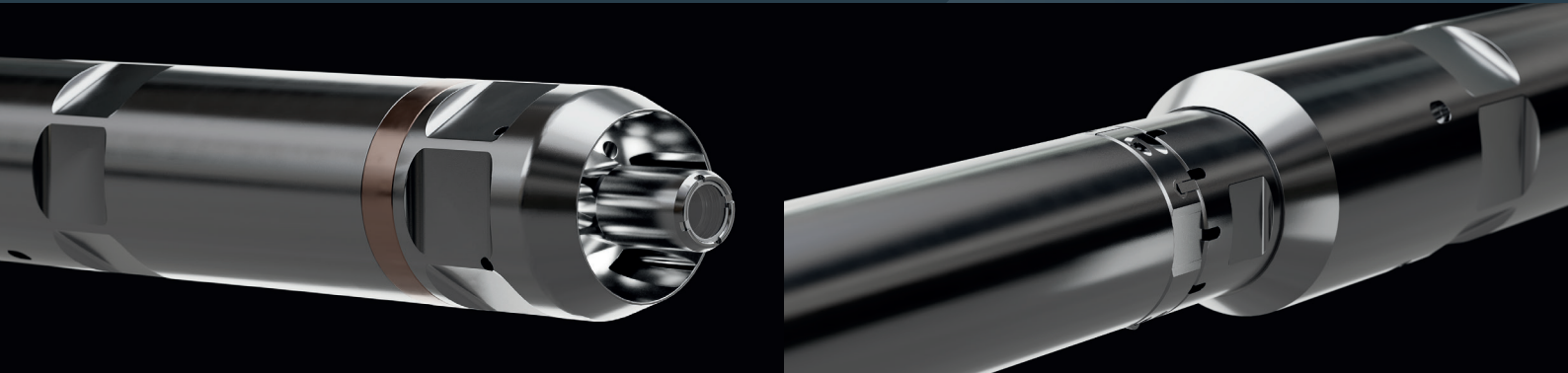
*ACTive is a registered trademark of Schlumberger

OPTIS[®] FIBRE COIL

evcam.com



THE DOWNHOLE VISUAL
ANALYTICS COMPANY



SPECIFICATIONS

Diameter	1.7 in	43.0 mm
Length	102.9 in	2614.0 mm
Pressure rating	15,000 psi	1034 bar
Temperature rating	257 °F	125 °C
Camera Type	Downview (Full Colour)	
Video Frame Rate	Up to 25 fps	
Recording Capacity	Continuous real time transmission to surface	
Power	Lithium or Alkaline Batteries	
Power Time	Up to 24 hours	
Flushing Sleeve Outer Diameter	2.9 in 2.125 in	73.0 mm 54.0 mm
Maximum Pump Rate	Up to 2 bbl/min	
Connection	Schlumberger ACTIVE™ Optical Bulkhead	
Maximum Optical Fibre Length	25,000 ft	7,620 m

Example tool string

